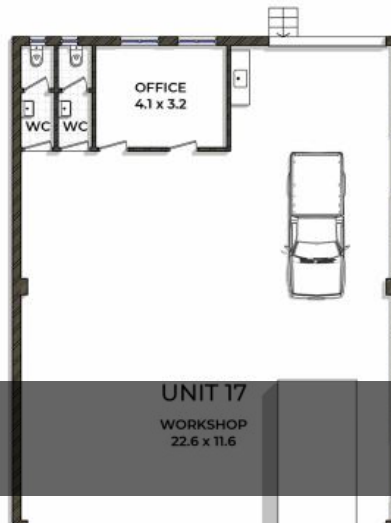
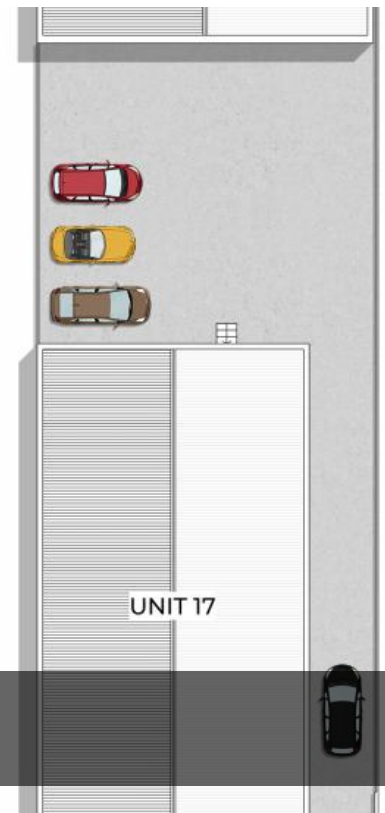


MEZZANINE LEVEL FLOOR PLAN



UNIT 17
WORKSHOP
22.6 x 11.6



UNIT 17



UNIT 17a
17 & 17A Hugh St, Belmore

WORKSHOP
20.5 x 14.5



2 FREESTANDING WAREHOUSES.

Ideally located just off Benaroon Road and within close proximity to Punchbowl Road, Cosgrove Road and King Georges Road.

Factory 1 # LEASED ON 1/7/2023

- Approx 300sqm with an office
- Parking up to 4 cars
- Clear span high clearance
- Male and female toilets

Factory 2 # DEPOSIT TAKEN OFF MARKET

- Approx 280sqm with an office
- Mezzanine
- Parking up to 6 cars
- Male and female toilets

Additional features:

- * High clearance warehouse ranging between 4.7m - 5.5m
- * Two motorised roller doors
- * Three phase power available
- * Suits a variety of uses

Option to take 1 or both together

Price LEASED BY NICK TRINGAS

Property Type Commercial

Property ID 286

Agent Details

Nick Tringas - 0412 414 600

Office Details

Kyeemagh Office
166 Bestic Street Kyeemagh, NSW,
2216 Australia
02 9335 9800

TRINGAS PROPERTY GROUP

For more information, or to arrange an immediate inspection please contact
exclusive agent listed below.

Nick Tringas

Tringas Property Group Kyeemagh

0412 414 600

9335 9800

The above information provided has been furnished to us by the vendor/s. We have not verified whether or not that information is accurate and do not have any belief in one way or the other in its accuracy. We do not accept any responsibility to any person for its accuracy and do no more than pass it on. All interested parties should make and rely upon their own inquiries in order to determine whether or not this information is in fact accurate.